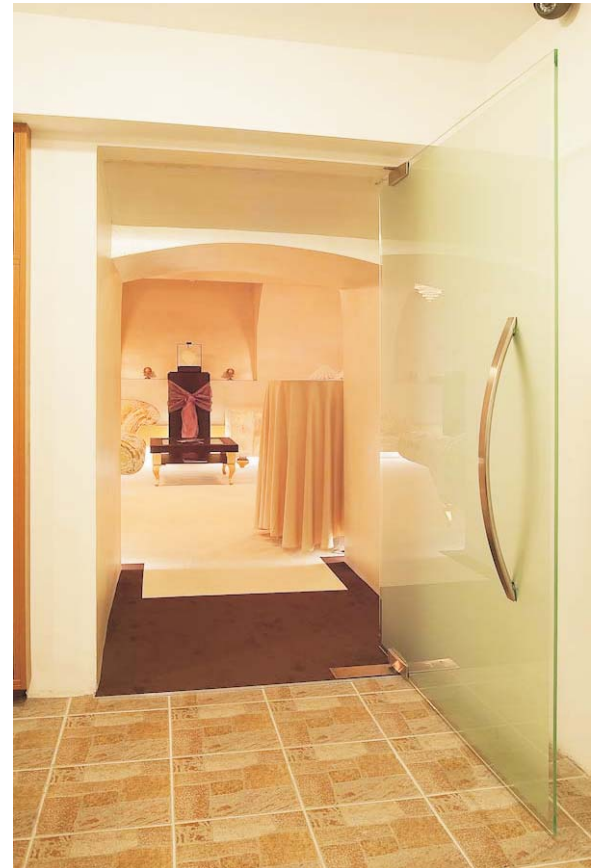


Cl/SfB 125	(2-)	(W7)
Common Arrangement C40/J30/J31/P22		

**Project: Factory and On-site Application**  
**Title: Royal Diamond Retailer, Budapest, Hungary**  
**Date: November 2009**

Local glass construction specialist, Alba Brothers, designed and installed the glass for the new jewellers in the heart of Hungary's capital city. As licensed applicators, Alba used the ClearShield® System to upgrade glass surfaces to make them 'non-stick' and easy to clean, so they stay looking like new for longer and with significantly less maintenance.

The project demonstrates the System's versatility for application onto internal and external glass both in the factory or in-situ to glass already installed. Sandblasted surfaces and deep sandblasted logos on the glass door were upgraded to ClearShield Low-M® (Low-Maintenance) Glass in Alba Brothers' factory before being installed. The existing store's glass entrance portal was upgraded to ClearShield Low-M® Glass in-situ following a specialist renovation process. Glass cabinets inside the store were also upgraded in-situ to provide an effective barrier against unsightly fingermarks from frequent handling by staff and customers, and keep the glass quick and easier to clean.



For a diamond retailer, the appearance inside and outside is important, and ClearShield Low-M® Glass helps maintain this.

The owner of the new diamond store is delighted with the results, says Zoltan Cszimadia of Alba Brothers: "Unprotected glass in his other outlets requires monthly maintenance, while the ClearShield Low-M Glass in the new store only needs cleaning every three months to keep it in pristine condition, which is a major saving in time and cost."

